

# SIDBI says Goodbye to Threat, with ESDS' MTvScan



## About SIDBI

### **SIDBI wants to maintain high credibility even in situations of threat**

Small Industries Development Bank of India (SIDBI) is the principal financial institution for promotion, financing and development of the Micro, Small and Medium Enterprise (MSME) sector and for co-ordination of the functions of the institutions engaged in similar activities.

SIDBI is considered amongst the world's top 30 development banks having their domain MSMEs, which contribute significantly to the national economy in terms

of production, employment and exports. SIDBI has a vast network of around 3 crore units, creating employment of about 7 crore, manufacturing more than 6,000 products, contributing about 45% to manufacturing output and about 40% of exports directly and indirectly.

Due to growing digitalization, the world has certainly come closer. SIDBI was on its way of digitization so as to sustain with the growing competition but there were challenges involved. SIDBI being an important banking organization was vulnerable to online threats, hackers, web attackers etc.



## The Need

SIDBI had security issues as they had very crucial data on their website. They wanted to protect their website from web attacks and make their website, clients and themselves secure.

SIDBI concerned that websites face serious vulnerabilities as a result of weak server security, creating an environment where attackers can compromise sensitive data. Cyber criminals can cause real-time damage by bringing websites down and taking control over all or some part of the website. Working on such a massive

scale and having such crucial and confidential information SIDBI was also concerned about security issues on their website.

ESDS' MTvScan (Security as a Service) was the perfect solution for SIDBI's quandary. MTvScan has an extensive scanning package which examines different types of vulnerabilities and determines the security patches to be applied, with open port scanning & automatic Content Management System (CMS) scanning.



## The Challenge

### **SIDBI gets nervous about web security, while digitizing its banking processes**

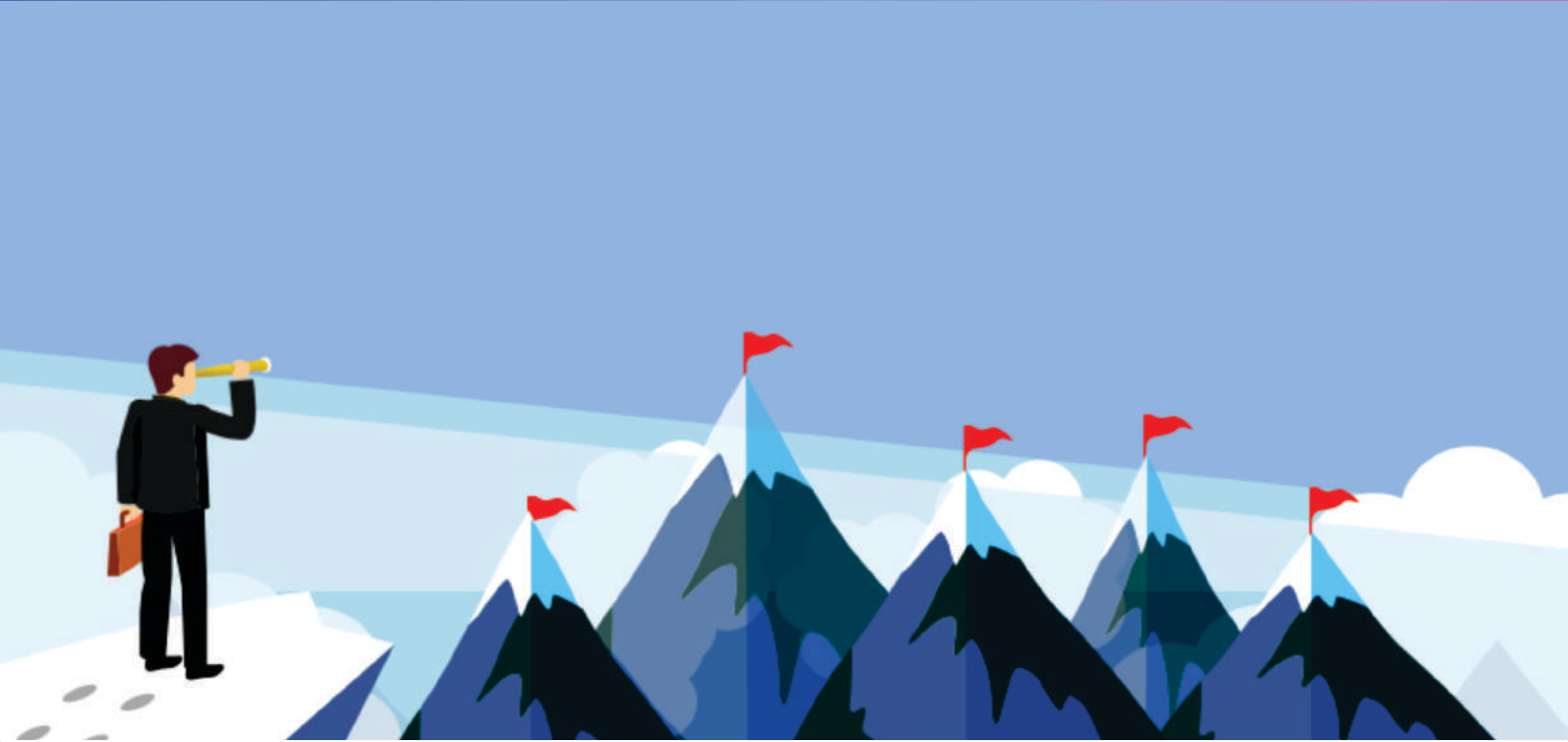
#### The Risk Factor:

According to a survey by White Hat server security, 86% of all websites had at least one serious vulnerability and organizations need to understand that if we leave the door open to breaches and thereby pave way for vulnerabilities. SIDBI being into financial services needed a robust solution for their security issues.

Cyber-crime: Due to introduction of latest security technologies such as barriers and CCTV, we have successfully minimized such crimes to a certain extent. Unfortunately, that does not mean that the banking sector

is safe. On the contrary, banking sector is now facing a more serious threat. In this new era of technological advancement the perpetrators can transfer millions of pounds (or indeed any currency) within seconds to different accounts and move money across jurisdictions and borders with a few strokes of the keyboard. The full extent of the threat of cyber-crime is only emerging and is almost certainly going to hit the headlines in 2015.

SQL Injection: SQL injection is one of the oldest and most common vulnerability which can attack any website. In this attack, the attacker injects a malicious statement commonly known a malicious payload that controls a web application's database server also known as Relational Database Management System (RDBMS).



## The Challenge

By leveraging an SQL injection vulnerability, given the right circumstances, an attacker can use it to bypass a web application's authentication, authorization mechanisms and retrieve the content of an entire database. SQL injection can also be used to add, modify and delete records in a database, affecting data integrity. To such an extent, SQL injection can provide an attacker with unauthorized access to sensitive data including, customer data, personally identifiable information (PII), trade secrets, intellectual property and other sensitive information.

Database access and the theft or corruption of personal or sensitive data: Being into financial services SIDBI's

website consisted crucial information about customers such as login details and passwords. Due to valuable information in SIDBI's database, it was more likely to be targeted. Their records included sensitive & financial information that could facilitate fraud. Even basic personal information can also be valuable. It may be used to impersonate someone, to spread malware or simply as a means to disrupt their services for personal motivations.

Denial of Service (DoS) attacks: DDoS is a type of DOS attack where multiple compromised systems, which are often infected with a Trojan, are used to target a single system causing a Denial of Service (DoS) attack.



## The Solution

### **SIDBI decides to go with ESDS' MTvScan to take charge of mitigating threat lurking around SIDBI's portal**

SIDBI decided to go with ESDS' MTvScan as it offers an end-to-end enterprise scanning solution and is comprehensive in nature, as against other solutions which offer few modules instead of a 360° solution for risk mitigation. MTvScan provided an exclusive package of

security features which make SIDBI's website secure and reliable.

MTvScan has proven to be an intelligent security solution for SIDBI's website that goes far beyond the average website scanning utility. MTvScan scans website for malware, XSS vulnerabilities, and trojan horses and checks the website for issues with website code, server settings, mail spam, domain reputation and much more.





## The Benefit

### SIDBI achieves comprehensive & automated risk management with MTvScan

The switch to MTvScan certainly proved to be very beneficial in various aspects for SIDBI.

#### Complete Risk Mitigation

Virus and malware detection issues that were not picked up previously but are now identified and dealt quickly. All the new threats after detection are being deleted from the roots.

#### Low Cost Risk Mitigation

Implementing MTvScan has incredible helped SIDBI to reduce its security costs. As MTvScan's intelligent scanning helps them to detect any vulnerability or threats prior to any attacks. It helps the developers to rectify the issues then and there before aggravations. This helps SIDBI in saving any overheads.

#### Automated Risk Mitigation

Thanks to MTvScan's agentless and less manual intervention required, SIDBI no longer have to worry about its security issues, and can work towards greater

efficiencies for the organization. Content management system (CMS):

In today's fast-paced business world there's an ever-growing need for quick changes to web content. CMS is a computer application that allows publishing, editing, modifying, organizing, deleting, and maintaining content from a central interface. Since SIDBI's CMSs are often used by non-technical users, they tend to be attractive targets. Therefore, CMS was a major source of vulnerabilities on SIDBI's website. Moreover, since the source code is available for everyone, the attackers are aware of how the system works. Open source CMS operate in a hostile environment. CMS detection helped in finding vulnerable plugins, themes and unprotected login areas.

#### Peace of mind/high standards

A security solution that meets the standards of this high-profile organization and most importantly, protects its reputation in a close-knit industry. The IT department at SIDBI is convinced they made the right decision and say their lives are much easier on a day-to-day basis.