



## The Next Milestone Technologies Pvt. Ltd.

121/122, Mastermind 1, Royal Palms, Off Aarey Milk Colony Road,  
Goregaon East, Mumbai - 400 065

# About Us

Talgro is a leading EdTech company pioneering AI-driven LMS technology solutions and carefully crafted skilling programs developed by renowned thought-leaders and universities, globally.

Talgro LMS-LXP is the winner of the 'Most Innovative LMS globally' award from GEC. The learning management platform enables collaborative learning, action learning, and learning engagement to create tremendous success for any developmental program.

Talgro's execution education vertical and online skills diagnostics platform makes it easy for people to understand their skills gap and their career orientation, leading to scientific decisions around upskilling & reskilling choices. Our repertoire of more than 30 skilling courses prepare individuals and enterprises for skills of the future and other high impact skilling needs.

## Founding Team



**JAGMOHAN BHANVER**  
Founder & CEO  
Strategy | Growth



**SUBRAMANIAN A.**  
Co-Founder  
Chief People Officer



**UMESH RATEJA**  
Head – Partnerships & Strategic  
Alliances



**KOMAL SHAHDADPURI**  
Co-Founder  
VP - Product Management



**ALKAS CHACHONDIA**  
VP - Technology



**ASHA SAINANI**  
Internal Operations

# Talgro LMS-LXP

Talgro is an AI-driven SaaS based Learning Management System with in-built Learner Experience capabilities. Talgro propels learning for the new age intelligent workplace. It acts as an engine to house, disseminate, and track learning programs globally with the capacity to scale millions of users, world class features and an interactive, simple, and easy-to-use interface. Talgro provides a single, secure, centralized ecosystem for learning professionals to plan, manage & execute their learning programs. Using a combination of unified virtual, classroom, mobile, and social learning, Talgro enables learning departments to empower their employees, customers, suppliers, stakeholders, among others.

With Talgro, learners of all capabilities & roles, gain Anytime, Anywhere, Any Device access to personalized Learning Paths (LP) comprising courses, content, assessments, action planning and coaching/mentoring support. Talgro's design drives maximum engagement and information retention among learners through interactions, instructors' ownership, discussion boards, feedback etc. Using cutting edge technology of Artificial Intelligence (AI), Machine Learning (ML), Data Analytics, Deep Learning among others, Talgro transforms the way learning is imparted for individuals & enterprises.

The Live Analytics feature ensures continuous, real time feedback on performance and engagement of learners, instructors, content, courses, and other critical parameters, which in turn allow immediate correction.

## Solutions



Education



Financial Services



Information Technology



Outsourcing



Aviation



Automotive



Energy



Franchise



Healthcare



Hospitality



Retail



Manufacturing



Telecommunications

# The Talgro Advantage

- ➔ Unique user identities and personalized dashboards
- ➔ System capability to assign permissions and rights to different user groups

**User Management**

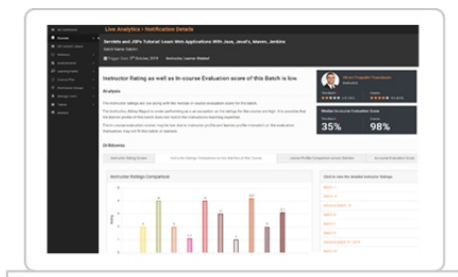
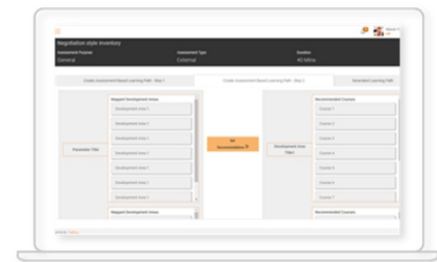


**Simplified Learning Administration**

- ➔ Easy curation, Authoring, Mass distribution & tracking online courses
- ➔ Simplicity in scheduling & tracking courses
- ➔ Single secure centralized ecosystem
- ➔ Unified virtual, classroom, mobile & social learning
- ➔ Anytime, Anywhere, Any device access
- ➔ Intelligent insights to make real time course correction

- ➔ An AI-based algorithm that recommends personalized Learning paths for learners
- ➔ Learning Paths can be Role based, Assessment based or Manual

**Personalized Learning Paths**

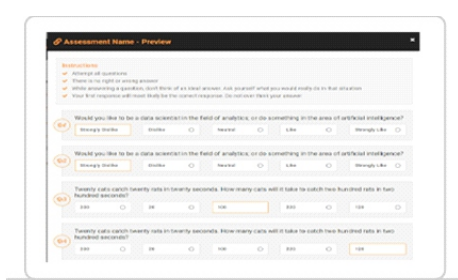
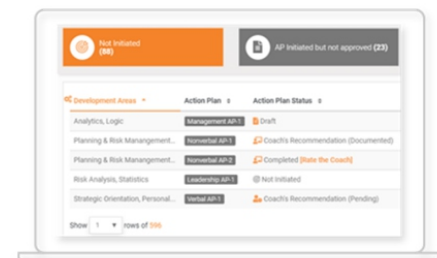


**Live Analytics**

- ➔ 'Live' insights on Instructor effectiveness, course content effectiveness, assessing learner difficulties, learner engagement and pedagogy effectiveness
- ➔ Real-time changes to address identified gaps and make learning exponentially more effective

- ➔ Virtual module for setting action plans and monitoring learning implementation
- ➔ Online projects for learners
- ➔ Online evaluation & mentoring on post-learning implementation
- ➔ Alignment between Learners, Managers, Instructors/Coaches for post-learning effectiveness

**Super-value adds**



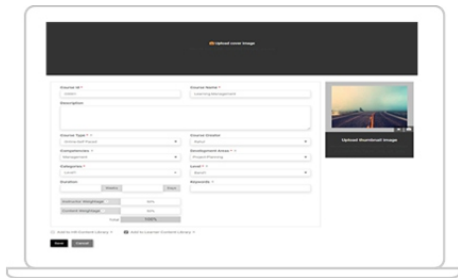
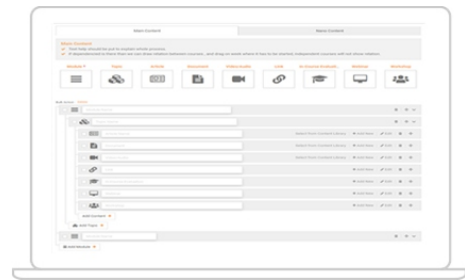
**Assessments and on-going evaluations**

- ➔ In-course assessments to check Learners' understanding
- ➔ General assessments to test functional, technical, behavioral and other skills
- ➔ Choice of 9 types of questionnaire formats (for MCQs) and subjective questions
- ➔ Integration with Psychometric test platforms
- ➔ Integration with Online Proctoring software

# The Talgro Advantage

- ➔ Use of AI and ML to curate the right content for Learners
- ➔ Differentiated Learning Experience ensures greater learning stickiness and engagement
- ➔ Gamification to make Learning more engaging and fun

## Content Curation



## Focus on Learning

- ➔ Self-paced learning modules for differently abled learners
- ➔ Nano learning principles and byte-sized content
- ➔ Options of different learning media (video, audio, reading material, links)
- ➔ Sustained and continuous learning

- ➔ Learners earn "Engagement Points" based on active participation, assessments, Q&A, discussion forum and more
- ➔ Engagement score indicates Learners' interest
- ➔ Knowledge of varying engagement levels of Learners enables stakeholders to proactively address the same

## Tracking Student Engagement

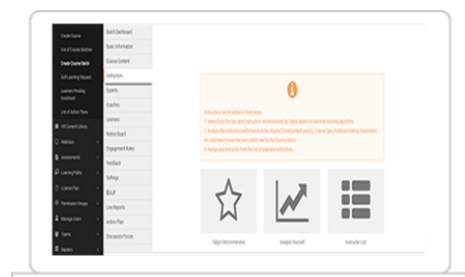


## Social and Collaborative Learning

- ➔ Peer learning within Talgro through discussions on ongoing topics
- ➔ Collaborative learning on projects and group assignments
- ➔ Avenues include Q&A, FAQs, Ask an Expert, Discussion forums

- ➔ AI/ML algorithms to recommend and assign Instructors to different courses
- ➔ Option of manual assigning of instructors to courses or specific learner groups

## ML-based Trainer Recommendations



## ROI measurement

- ➔ Action planning module and online assessments to assess Learner progress and post-learning implementation
- ➔ Integration of psychometric assessments enables valuable inputs to improve course structuring, pedagogical preferences and overall program efficacy

## Talgro LMS Features

LMS integrated with LXP functionality

Real time analytics

Mobile and Cloud based

Accessible on any device from anywhere

Measurement of Instructor effectiveness

In-course evaluations

Integration with Video proctoring

In-built MCQ question formats

Facility for Learners to upload answers, documents, videos

Measurement of Learner performance & difficulty analysis

Management and measurement of Learner engagement

Facility for Instructors and Course Administrators to upload content in multiple formats (audio, video, reading material, links)

Ease of creating courses online

Creation of batches for separate courses

Analytics driven 'real time' changes to content, pedagogy and instructor

Personalized learning paths for learners

Curation of content from various sources

Self-paced learning for differently abled learners

Integration with other ERP software if needed

In-built module for setting action plans and monitoring learning implementation

Capability to provide online projects to learners and oversee the same

Use of AI (artificial intelligence) and ML (machine learning) to increase effectiveness of courses

Online reports management (including personalized progress reports)

## Technology Stack



# Virtual Interactive Learning



## Anywhere, Anytime, Any device

Access recorded sessions and lectures from any device, anywhere, anytime



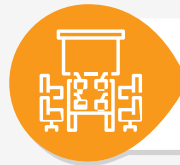
## Make your Presentations

Now you can be in-charge and make presentations to your team and the facilitator



## Personalized Dashboard

Ready access to all your learning activities



## Breakout Rooms

For you and your batch-partners to discuss your assignment and activity in private



## Live Analytics

Tells you how you compare on engagement and performance with your peers



## Content Availability

Case studies, reading material, assignments, assessments, project material all on your dashboard



## Collaborative Learning

Allows you to work with your batch-partners and collaborate on learning activities



## Tech Support

Dedicated technical assistance in case of any issues



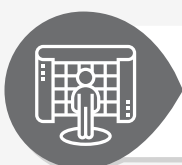
## Ease of Use

Automatic login and a live demo on how to use the Virtual platform



## Personalized Learning Paths

Based on assessments, roles or other criteria



## Interactive

Advanced Public and Private chat features to help interaction



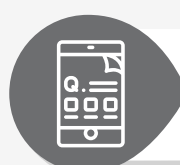
## Action Planning Technology<sup>©</sup>

To get personalized feedback from your Coach on your IDP



## Real-time Feedback

AI & ML algorithms let you know what is going well and what you could do better



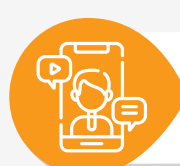
## In-course Evaluations

To let you know where you stand on a particular topic



## Q & A with Facilitator

Put up questions to your trainer and check the response on any device



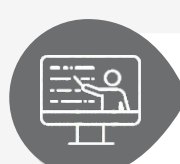
## Nano Learning

Byte sized inputs to ensure continuous learning even after the course is over



## Virtual Classroom

Whiteboard and presentation screens during the lectures



## Blended Learning

An effective balance of self-paced learning, live classes and assignments